

LINCOLN (LNK) 4 NW UTC-6(-5DT) N40°51.05' W96°45.55'

OMAHA

1219 B S4 FUEL 100LL, JET A TPA—See Remarks ARFF Index—See Remarks

H-5C, L-101

NOTAM FILE LNK

IAP, AD

RWY 18-36: H1290X200 (ASPH-CONC-GRVD) S-100, D-200, 2S-175, 2D-400 HIRL

RWY 18: MALSR. PAPI(P4L)—GA 3.0° TCH 55'. Rgt tfc. 0.4% down.

RWY 36: MALSR. PAPI(P4L)—GA 3.0° TCH 57'.

RWY 14-32: H8649X150 (ASPH-CONC-GRVD) S-80, D-170, 2S-175, 2D-280 MIRL

RWY 14: REIL. VASI(V4L)—GA 3.0° TCH 48'. Thld dsplcd 363'.

RWY 32: VASI(V4L)—GA 3.0° TCH 50'. Thld dsplcd 470'.

Pole. 0.3% up.

RWY 17-35: H5800X100 (ASPH-CONC-AFSC) S-49, D-60 HIRL 0.8% up S

RWY 17: REIL. PAPI(P4L)—GA 3.0° TCH 44'.

RWY 35: ODALS. PAPI(P4L)—GA 3.0° TCH 30'. Rgt tfc.

RUNWAY DECLARED DISTANCE INFORMATION

RWY 14: TORA-8649 TODA-8649 ASDA-8649 LDA-8286

RWY 17: TORA-5800 TODA-5800 ASDA-5400 LDA-5400

RWY 18: TORA-12901 TODA-12901 ASDA-12901 LDA-12901

RWY 32: TORA-8649 TODA-8649 ASDA-8286 LDA-7816

RWY 35: TORA-5800 TODA-5800 ASDA-5800 LDA-5800

RWY 36: TORA-12901 TODA-12901 ASDA-12901 LDA-12901

AIRPORT REMARKS: Attended continuously. Birds invof arpt. Rwy 18 designated calm wind rwy. Rwy 32 apch holdline on South A twy. TPA-2219 (1000), heavy military jet 3000 (1781). Class I, ARFF Index B. ARFF Index C level equipment provided. Rwy 18-36 touchdown and rollout rwy visual range avbl. When twr clsd MIRL Rwy 14-32 preset on low ints, HIRL Rwy 18-36 and Rwy 17-35 preset on med ints, ODALS Rwy 35 operate continuously on med ints, MALSR Rwy 18 and Rwy 36 operate continuously and REIL Rwy 14 and Rwy 17 operate continuously on low ints. VASI Rwy 14 and Rwy 32, PAPI Rwy 17, Rwy 35, Rwy 18 and Rwy 36 on continuously.

WEATHER DATA SOURCES: ASOS (402) 474-9214. LLWAS

COMMUNICATIONS: CTAF 118.5 ATIS 118.05 UNICOM 122.95

RCO 122.65 (COLUMBUS RADIO)

Ⓡ APP/DEP CON 124.0 (180°-359°) 124.8 (360°-179°)

TOWER 118.5 125.7 (1130-0600Z‡) GND CON 121.9 CLNC DEL 120.7

AIRSPACE: CLASS C svc 1130-0600Z‡ ctc APP CON other times CLASS E.

RADIO AIDS TO NAVIGATION: NOTAM FILE LNK.

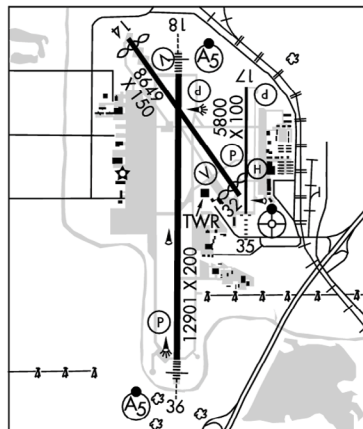
(H) VORTACW 116.1 LNK Chan 108 N40°55.43' W96°44.52' 181° 4.4 NM to fld. 1370/9E

POTTS NDB (MHW/LOM) 385 LN N40°44.83' W96°45.75' 355° 6.2 NM to fld. Unmonitored when twr clsd.

ILS 111.1 I-OCZ Rwy 18. Class IB OM unmonitored.

ILS 109.9 I-LNK Rwy 36 Class IA LOM POTTS NDB. MM unmonitored. LOM unmonitored when twr clsd.

COMM/NAV/WEATHER REMARKS: Emerg frequency 121.5 not available at twr.



LOUP CITY MUNI (ØF4) 1 NW UTC-6(-5DT) N41°17.20' W98°59.41'

OMAHA

2071 B FUEL 100LL NOTAM FILE OLU

L-10H, 12H

RWY 16-34: H3200X60 (CONC) S-12.5 MIRL

RWY 34: Trees.

RWY 04-22: 2040X100 (TURF)

RWY 04: Tree. **RWY 22:** Road.

AIRPORT REMARKS: Unattended. For svc call 308-745-1344/1244/0664.

COMMUNICATIONS: CTAF 122.9

RADIO AIDS TO NAVIGATION: NOTAM FILE OLU.

WOLBACH (H) VORTAC 114.8 OBH Chan 95 N41°22.54' W98°21.22' 253° 29.3 NM to fld. 2010/7E.

MARTIN FLD (See SO SIOUX CITY)

Figure 52. Chart Supplement.

TOLEDO

TOLEDO EXECUTIVE (TDZ) 6 SE UTC-5(-4DT) N41°33.90' W83°28.93'

623 B S4 FUEL 100LL, JET A OX 1, 3 NOTAM FILE TDZ
RWY 14-32: H5829X100 (ASPH-GRVD) S-63, D-85, 2S-107 MIRL

RWY 14: REIL. PAPI(P4L)—GA 3.0° TCH 34'. Thld dsplcd 225'.

Tower.

RWY 32: VASI(V4L)—GA 3.0° TCH 43'. Thld dsplcd 351'. Road.

RWY 04-22: H3799X75 (ASPH) S-63, D-85, 2S-107 MIRL

RWY 04: REIL. PAPI(P4L)—GA 3.5° TCH 35'. Thld dsplcd 100'.

Road.

RWY 22: REIL. PAPI(P4L)—GA 3.0° TCH 25'. Thld dsplcd 380'.

Railroad.

AIRPORT REMARKS: Attended Mon-Fri continuously, Sat-Sun 1300-0100Z±. Parallel twy Rwy 04-22 and Rwy 14-32 35' wide. Seagulls on and invof arpt. Ldg fee. ACTIVATE MIRL Rwy 04-22 and Rwy 14-32, REIL and PAPI Rwy 04, Rwy 22, Rwy 14 and VASI Rwy 32—CTAF.

WEATHER DATA SOURCES: ASOS 121.575 (419) 838-5034.

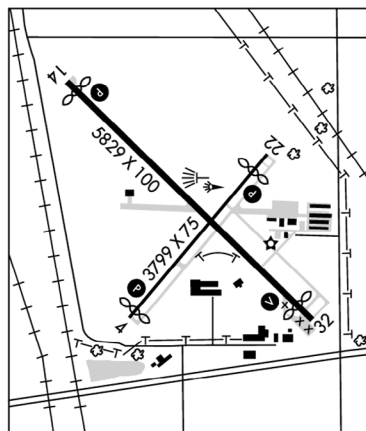
COMMUNICATIONS: CTAF/UNICOM 123.05

Ⓡ APP/DEP CON 126.1 CLNC DEL 125.6

RADIO AIDS TO NAVIGATION: NOTAM FILE CLE.

WATERVILLE (L) VOR/DME 113.1 VVV Chan 78 N41°27.09' W83°38.32' 048° 9.8 NM to fld. 664/2W.

DETROIT
H-106, L-28J
IAP



TOLEDO EXPRESS (TOL) 10 W UTC-5(-4DT) N41°35.21' W83°48.47'

683 B S4 FUEL 100LL, JET A OX 3 LRA Class I, ARFF Index B NOTAM FILE TOL

RWY 07-25: H10599X150 (ASPH-GRVD) S-100, D-174, 2S-175, 2D-300, 2D/2D2-550

HIRL CL

RWY 07: ALSF2. TDZL. Trees.

RWY 25: MALSR. VASI(V4L)—GA 3.0° TCH 51'. Trees. 0.3% up.

RWY 16-34: H5599X150 (ASPH-GRVD) S-100, D-174, 2S-175, 2D-300 MIRL

RWY 16: REIL. PAPI(P4L)—GA 3.0° TCH 48'. Trees.

RWY 34: REIL.

RUNWAY DECLARED DISTANCE INFORMATION

RWY 07: TORA 10599 TODA 10599 ASDA 10599 LDA 10599

RWY 16: TORA 5599 TODA 5599 ASDA 5599 LDA 5599

RWY 25: TORA 10599 TODA 10599 ASDA 10599 LDA 10599

RWY 34: TORA 5599 TODA 5599 ASDA 5599 LDA 5599

ARRESTING GEAR/SYSTEM

RWY 07 ←BAK-12 BAK-12 →RWY 25

AIRPORT REMARKS: Attended continuously. Fuel and svc avbl 1300-0500Z±. Birds on and invof arpt. Twy A west of Rwy 16 and the ramp between Twy B9 and B13 not visible from twr. Twy D intersection of Twy D1, heavy acft use minimal power to reduce foreign object damage on Air National Guard ramp. Customs: Sat-Sun req must be made prior to 2200Z± on Fri, phone 419-259-6424.

WEATHER DATA SOURCES: ASOS (419) 865-8351.

COMMUNICATIONS: ATIS 118.75 UNICOM 122.95

Ⓡ APP/DEP CON 126.1 (360°-179°) 134.35 (180°-359°) 123.975

TOWER 118.1 GND CON 121.9 CLNC DEL 121.75

AIRSPACE: CLASS C svc continuous ctc APP CON

RADIO AIDS TO NAVIGATION: NOTAM FILE CLE.

WATERVILLE (L) VOR/DME 113.1 VVV Chan 78 N41°27.09' W83°38.32' 319° 11.1 NM to fld. 664/2W.

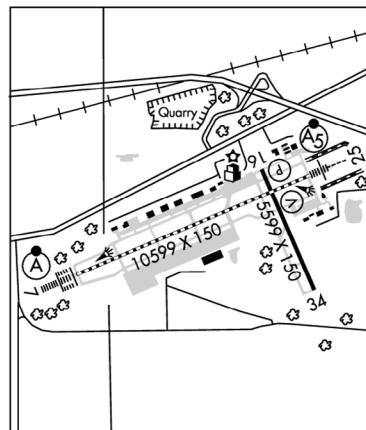
TOPHR NDB (LOM) 219 TO N41°33.21' W83°55.27' 074° 5.5 NM to fld. Unmonitored. NOTAM FILE TOL.

ILS 109.7. I-TOL Rwy 07. Class IE. LOM TOPHR NDB.

ILS 108.7 I-BQE Rwy 25. Class IA. LOC unusable 0.4 NM inbound. ILS unmonitored when twr clsd.

ASR

DETROIT
H-106, L-28J
IAP, AD



SEAGATE HELIPAD (6T2) 00 N UTC-5(-4DT) N41°39.25' W83°31.88'

650 NOTAM FILE CLE

HELIPAD H1: H50X50 (CONC)

HELIPORT REMARKS: Unattended. ACTIVATE orange perimeter lgts—CTAF. Helipad H1 NSTD 1-box (2 VASIS). Helipad H1 not marked with "H." Helipad H1 perimeter lgts.

COMMUNICATIONS: CTAF/UNICOM 123.05

DETROIT

PIERRE RGNL (PIR) 3 E UTC -6(-5DT) N44°22.96' W100°17.16'

OMAHA

1744 B S4 FUEL 100LL, JET A OX 1, 2, 3, 4 Class I, ARFF Index A NOTAM FILE PIR

H-21, L-12H

RWY 13-31: H6900X100 (ASPH-GRVD) S-91, D-108, 2S-137, 2D-168 HIRL IAP

RWY 13: REIL. PAPI(P4L)-GA 3.0 ° TCH 52'.

RWY 31: MALSR. PAPI(P4L)-GA 3.0 ° TCH 52'.

RWY 07-25: H6881X150 (ASPH-GRVD) S-91, D-114, 2S-145, 2D-180 HIRL 0.6% up W

RWY 07: REIL. PAPI(P4L)-GA 3.0 ° TCH 47'. Tank.

RWY 25: REIL. PAPI(P4L)-GA 3.0 ° TCH 54'.

RUNWAY DECLARED DISTANCE INFORMATION

RWY 07: TORA-6881 TODA-6881 ASDA-6830 LDA-6830

RWY 13: TORA-6900 TODA-6900 ASDA-6900 LDA-6900

RWY 25: TORA-6881 TODA-6881 ASDA-6881 LDA-6881

RWY 31: TORA-6900 TODA-6900 ASDA-6900 LDA-6900

AIRPORT REMARKS: Attended Mon-Fri 1100-0600Z‡, Sat-Sun

1100-0400Z‡. For attendant other times call

605-224-9000/8621. Arpt conditions unmonitored during

0530-1000Z‡. Numerous non-radio acft operating in area. Birds

on and invof arpt and within a 25 NM radius. No line of sight

between rwy ends of Rwy 07-25. ARFF provided for part 121 air

carrier ops only. 48 hr PPR for unscheduled acf ops involving acft

designed for 31 or more passenger seats call 605-773-7447 or

605-773-7405. Taxiway C is 50' wide and restricted to acft 75,000 pounds or less. ACTIVATE HIRL Rwy 13-31

and Rwy 07-25, MALSR Rwy 31, REIL Rwy 07, Rwy 13 and Rwy 25, PAPI Rwy 07, Rwy 25, Rwy 13 and Rwy

31-CTAF 122.7. NOTE: See Special Notices Section-

Aerobatic Practice Areas.

WEATHER DATA SOURCES: ASOS 119.025 (605) 224-6087. HIWAS 112.5 PIR.

COMMUNICATIONS: CTAF 122.7 UNICOM 122.95

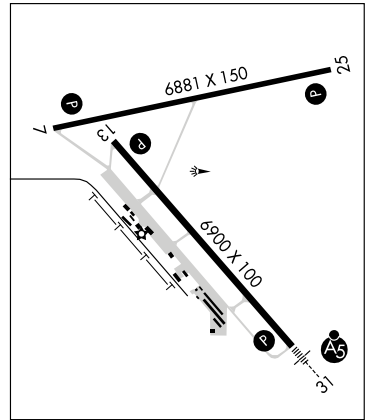
RCO 122.2 (HURON RADIO)

® MINNEAPOLIS CENTER APP/DEP CON 125.1

RADIO AIDS TO NAVIGATION: NOTAM FILE PIR.

(L) VORTACW 112.5 PIR Chan 72 N44°23.67' W100°09.77' 251° 5.3 NM to fld. 1789/11E. HIWAS.

ILS/DME 111.9 I-PIR Chan 56 Rwy 31. Class IA ILS GS unusable for coupled apch blo 2,255'. GS unusable blo 2135'.



PINE RIDGE (IEN) 2 E UTC -7(-6DT) N43°01.35' W102°30.66'

CHEYENNE

3333 B NOTAM FILE IEN

H-5B, L-12G

RWY 12-30: H5000X60 (ASPH) S-12 MIRL 0.7% up SE

IAP

RWY 12: P-line.

RWY 30: PAPI(P2L)-GA 3.0 ° TCH 26'. Fence.

RWY 06-24: H3003X50 (ASPH) S-12 0.7% up NE

RWY 24: Fence.

AIRPORT REMARKS: Unattended. Rwy 06-24 CLOSED indef. MIRL Rwy 12-30 and PAPI Rwy 30 opr dusk-0530Z‡, after 0530Z‡ ACTIVATE-CTAF.

WEATHER DATA SOURCES: ASOS 126.775 (605) 867-1584.

COMMUNICATIONS: CTAF 122.9

DENVER CENTER APP/DEP CON 127.95

RADIO AIDS TO NAVIGATION: NOTAM FILE RAP.

RAPID CITY (H) VORTAC 112.3 RAP Chan 70 N43°58.56'

W103°00.74' 146° 61.3 NM to fld. 3160/13E.

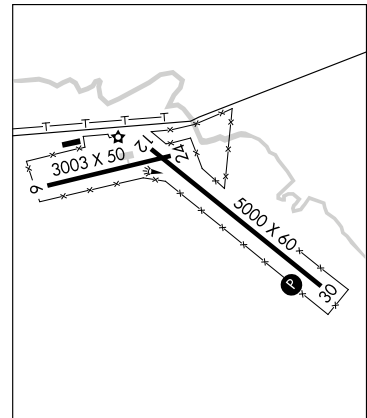


Figure 77. Chart Supplement.

SIoux CITY N42°20.67' W96°19.42' NOTAM FILE SUX OMAHA
 (L) VORTAC 116.5 SUX Chan 112 313 ° 4.4 NM to Sioux Gateway/Col Bud Day Fld. 1087/9E. HIWAS. L-121
 VOR unusable:
 280°-292° byd 25 NM 306°-350° byd 20 NM blo 3,000'
 293°-305° byd 20 NM blo 4,500' 350°-280° byd 30 NM blo 3,000'
 293°-305° byd 35 NM
RCO 122.45 122.1R 116.5T (FORT DODGE RADIO)

SIoux CITY

SIoux GATEWAY/COL BUD DAY FLD (SUX) 6 S UTC -6(-5DT) N42°24.16' W96°23.06' OMAHA
 1098 B S4 FUEL 100LL, 115, JET A OX 1, 2, 3, 4 Class I, ARFF Index-See Remarks H-5C, L-121
 NOTAM FILE SUX IAP, AD

Rwy 13-31: H9002X150 (CONC-GRVD) S-100, D-120, 2S-152,
 2D-220 HIRL
Rwy 13: MALS. VASI(V4L)-GA 3.0 ° TCH 49'. Tree.
Rwy 31: MALS. VASI(V4L)-GA 3.0 ° TCH 50'.
Rwy 17-35: H6600X150 (ASPH-PFC) S-65, D-80, 2S-102,
 2D-130 MIRL
Rwy 17: REIL. VASI(V4R)-GA 3.0 ° TCH 50'. Trees.
Rwy 35: PAPI(P4L)-GA 3.0 ° TCH 54'. Pole.

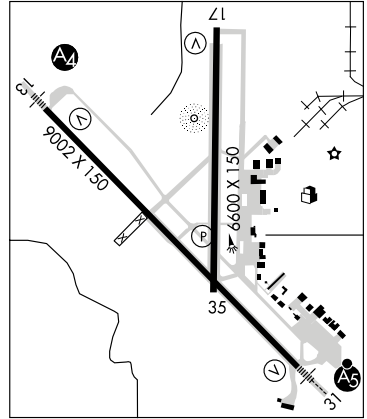
LAND AND HOLD SHORT OPERATIONS

LANDING	HOLD SHORT POINT	DIST AVBL
Rwy 13	17-35	5400
Rwy 17	13-31	5650

ARRESTING GEAR/SYSTEM

Rwy 13 ←BAK-14 BAK-12B(B) (1392')
 BAK-14 BAK-12B(B) (1492') →**Rwy 31**

AIRPORT REMARKS: Attended continuously. PAEW 0330-1200Z ‡ during inclement weather Nov-Apr. AER 31-BAK-12/14 located (1492') from thld. Airfield surface conditions not monitored by arpt management between 0600-1000Z ‡ daily. Rwy 13-BAK-12/14 located (1392') from thld. All A-gear avbl only during ANG flying ops. Twr has limited visibility southeast of ramp near ARFF bldg and northeast of Rwy 31 touchdown zone. Rwy 31 is calm wind rwy. Class I, ARFF Index B. ARFF Index E fire fighting equipment avbl on request. Twy F unlit, retro-reflective markers in place. Portions of Twy A SE of Twy B not visible by twr and is designated a non-movement area. Rwy 13-31 touchdown and rollout rwy visual range avbl. When twr clsd, ACTIVATE HIRL Rwy 13-31; MIRL Rwy 17-35; MALS Rwy 13; MALS Rwy 31; and REIL Rwy 17-CTAF.



WEATHER DATA SOURCES: ASOS (712) 255-6474. **HIWAS** 116.5 SUX. LAWRS.

COMMUNICATIONS: CTAF 118.7 ATIS 119.45 UNICOM 122.95

SIoux CITY RCO 122.45 122.1R 116.5T (FORT DODGE RADIO)

Ⓡ SIoux CITY APP/DEP CON 124.6 (1200-0330Z ‡)

Ⓡ MINNEAPOLIS CENTER APP/DEP CON 124.1 (0330-1200Z ‡)

SIoux CITY TOWER 118.7 (1200-0330Z ‡) **GND CON** 121.9

AIRSPACE: CLASS D svc 1200-0330Z ‡ other times CLASS E.

RADIO AIDS TO NAVIGATION: NOTAM FILE SUX.

SIoux CITY (L) VORTAC 116.5 SUX Chan 112 N42 °20.67' W96°19.42' 313 ° 4.4 NM to fld. 1087/9E. **HIWAS.**

NDB (MHW) 233 GAK N42°24.49' W96°23.16' at fld.

SALIX NDB (MHW/LOM) 414 SU N42°19.65' W96°17.43' 311 ° 6.1 NM to fld. Unmonitored.

TOMMI NDB (MHW/LOM) 305 OI N42°27.61' W96°27.73' 128 ° 4.9 NM to fld. Unmonitored.

ILS 109.3 I-SUX Rwy 31 Class I. **LOM SALIX NDB.** ILS Unmonitored when twr clsd. Glide path unusable coupled approach (CPD) blo 1805'.

ILS 111.3 I-OIQ Rwy 13 **LOM TOMMI NDB.** Localizer shutdown when twr clsd.

ASR (1200-0330Z ‡)

SNORE N43°13.96' W95°19.66' NOTAM FILE SPW. OMAHA
NDB (LOM) 394 SP 121 ° 6.8 NM to Spencer Muni.

SOUTHEAST IOWA RGNL (See BURLINGTON)

Figure 79. Chart Supplement.

CRAWFORD (99V) 2 W UTC -7(-6DT) N38°42.25' W107°38.62'

DENVER

6470 S2 OX 4 TPA-7470(1000) NOTAM FILE DEN

L-9E

RWY 07-25: H4900X20 (ASPH) LIRL (NSTD)**RWY 07:** VASI (NSTD). Trees. **RWY 25:** VASI (NSTD) Tank. Rgt tfc.**RWY E-W:** 2500X125 (TURF)**RWY E:** Rgt tfc.**RWY W:** Trees.

AIRPORT REMARKS: Attended continuously. Rwy 07-25 west 1300' only 25' wide. Heavy glider ops at arpt. Land to the east tkf to the west winds permitting. 100LL fuel avbl for emergency use only. Pedestrians, motor vehicles, deer and wildlife on and invof arpt. Unlimited vehicle use on arpt. Rwy West has +15' building 170' from thld 30' left, +10' road 100' from thld centerline. +45' tree 100' L of Rwy 07 extended centerline 414' from rwy end. -8' to -20' terrain off both sides of first 674' of Rwy 25 end. E-W rwy occasionally has 6 inch diameter irrigation pipes crossing rwy width in various places. Rwy 07 has 20' trees and -10' to 20' terrain 20' right of rwy first 150'. E-W rwy consists of +12 inch alfalfa vegetation during various times of the year. Arpt lgts opr dusk-0800Z±. Rwy 07 1 box VASI left side for local operators only or PPR call 970-921-7700 or 970-921-3018. Rwy 07-25 LIRL on N side from Rwy 25 end W 3800'. Rwy 07 1300' from end E 300'. No thld lgts Rwy 07-25 3800' usable for ngt ops.

COMMUNICATIONS: CTAF/UNICOM 122.8**RADIO AIDS TO NAVIGATION:** NOTAM FILE MTJ.**MONTROSE (H) VORW/DME** 117.1 MTJ Chan 118 N38°30.39' W107°53.96' 033° 16.9 NM to fld. 5713/12E.

CREEDE
MINERAL CO MEM (C24) 2 E UTC -7(-6DT) N37°49.33' W106°55.79'

DENVER

8680 NOTAM FILE DEN

H-3E, L-9E

RWY 07-25: H6880X60 (ASPH) S-12.5, D-70, 2D-110**RWY 07:** Thld dsplcd 188'.**RWY 25:** Road.

AIRPORT REMARKS: Unattended. Elk and deer on and invof arpt. Glider and hang glider activity on and in vicinity of arpt. Mountains in all directions. Departure to NE avoid over flight of trailers and resident homes, climb to 200' above ground level on centerline extended prior to turn. Acft stay to right of valley on apch and/or departure route. 2' cable fence around apron.

COMMUNICATIONS: CTAF 122.9**RADIO AIDS TO NAVIGATION:** NOTAM FILE DEN.**BLUE MESA (H) VORW/DME** 114.9 HBU Chan 96 N38°27.13' W107°02.39' 158° 38.1 NM to fld. 8730/14E.

CUCHARA VALLEY AT LA VETA (See LA VETA)

DEL NORTE
ASTRONAUT KENT ROMINGER (8V1) 3 N UTC -7(-6DT) N37°42.83' W106°21.11'

DENVER

7949 NOTAM FILE DEN

H-3E, L-9E

RWY 06-24: 6050X75 (ASPH) 1.1% up SW**RWY 03-21:** 4670X60 (TURF-DIRT)**RWY 21:** Mountain.

AIRPORT REMARKS: Unattended. Wildlife on and invof arpt. Unlimited vehicle access on arpt. Mountainous terrain surrounds arpt in all directions.

COMMUNICATIONS: CTAF 122.9**RADIO AIDS TO NAVIGATION:** NOTAM FILE ALS.**ALAMOSA (H) VORTACW** 113.9 ALS Chan 86 N37°20.95' W105°48.93' 298° 33.7 NM to fld. 7535/13E.